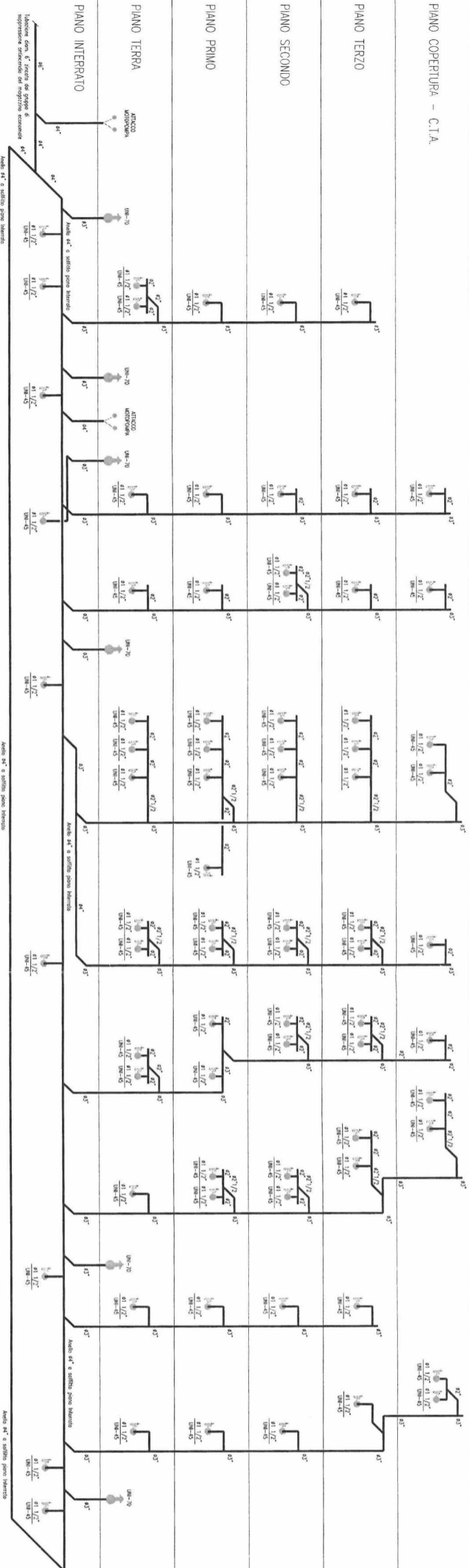
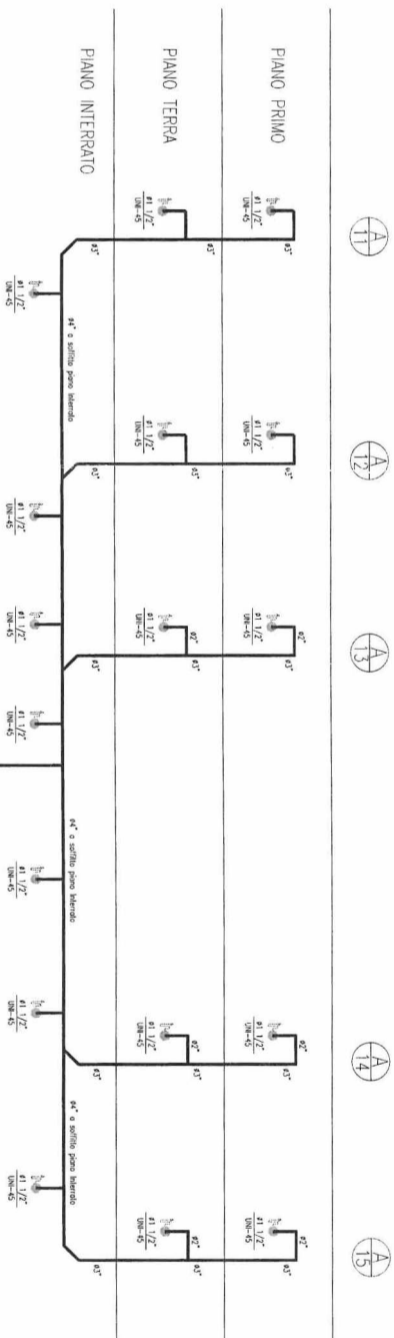


A, B, C, D, E, F, G, H, I, L, M, N, O, P

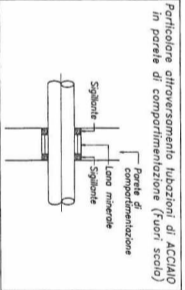
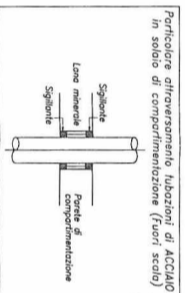
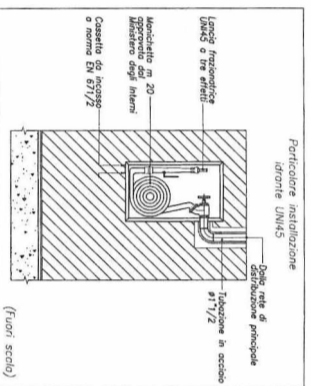
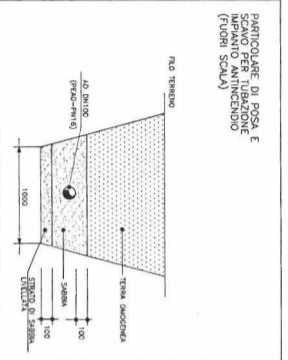
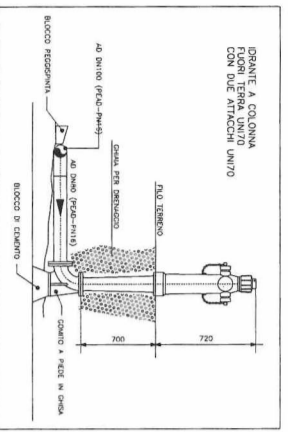
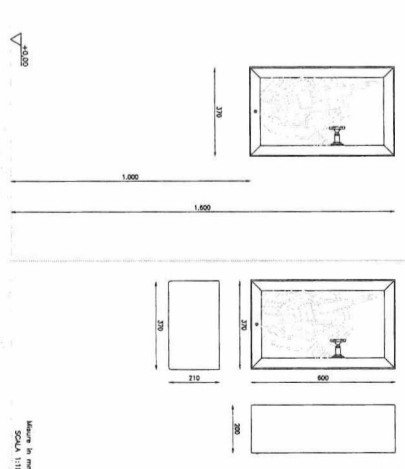
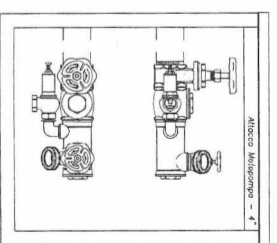
PIANO COPERTURA - CIA



NUOVO POLO CHIRURGICO E DELL'EMERGENZA



NUOVE PATOLOGIE ALI A e B



- LEGENDA
- UNI 70 DRANTE SPRESSILOIO UNI 70
 - ATTACCO MULTIPPOINT VWF
 - COLONNA INVARIANTE ANTINCENDIO
 - CASSETTA A MURO UNI 45
 - UNI 45