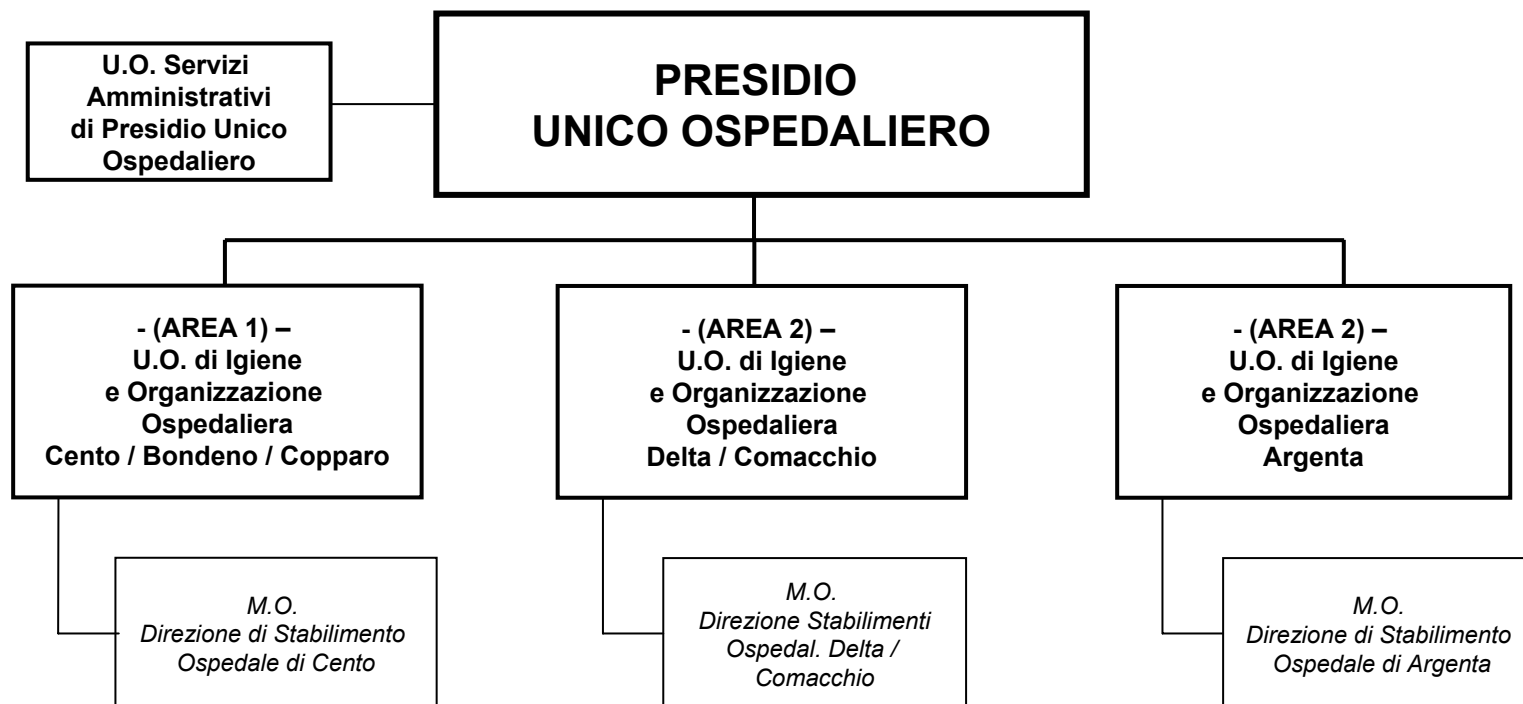


# *Presidio*

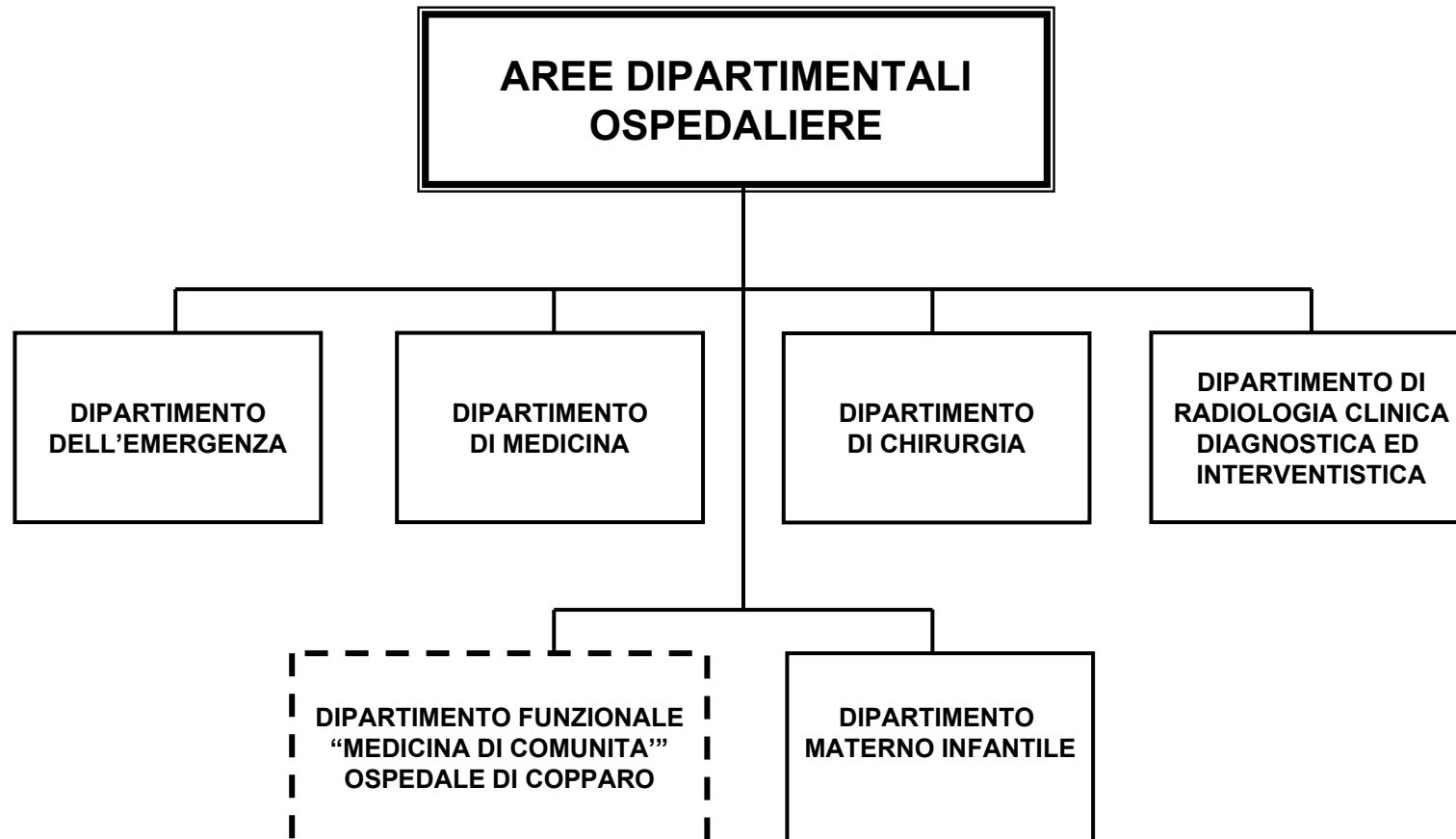
# *Unico Ospedaliero*

**(Organizzazione adottata con atti deliberativi n. 165 e n. 166 del 29.4.2010)**

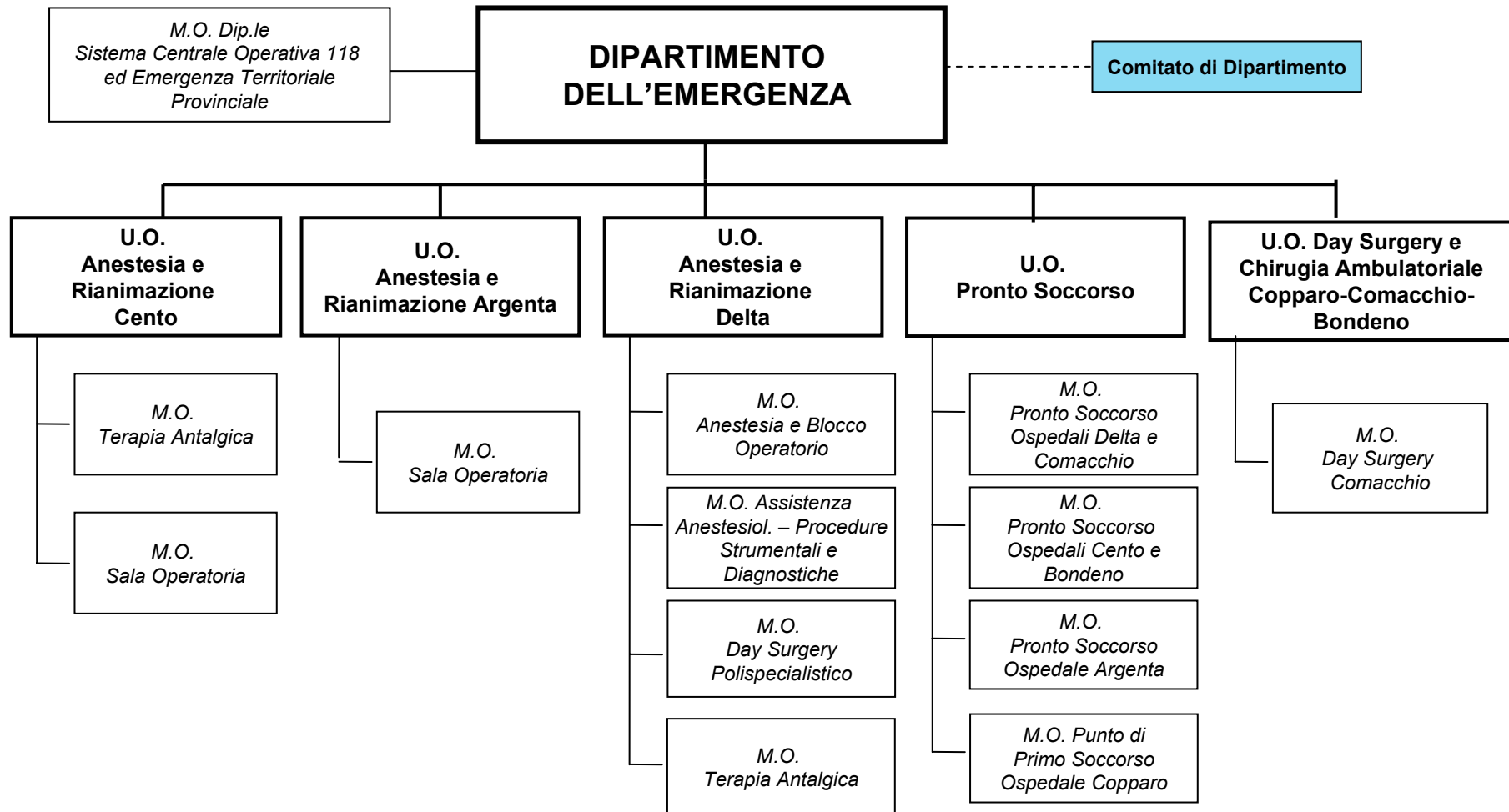
# ***PRESIDIO UNICO OSPEDALIERO***



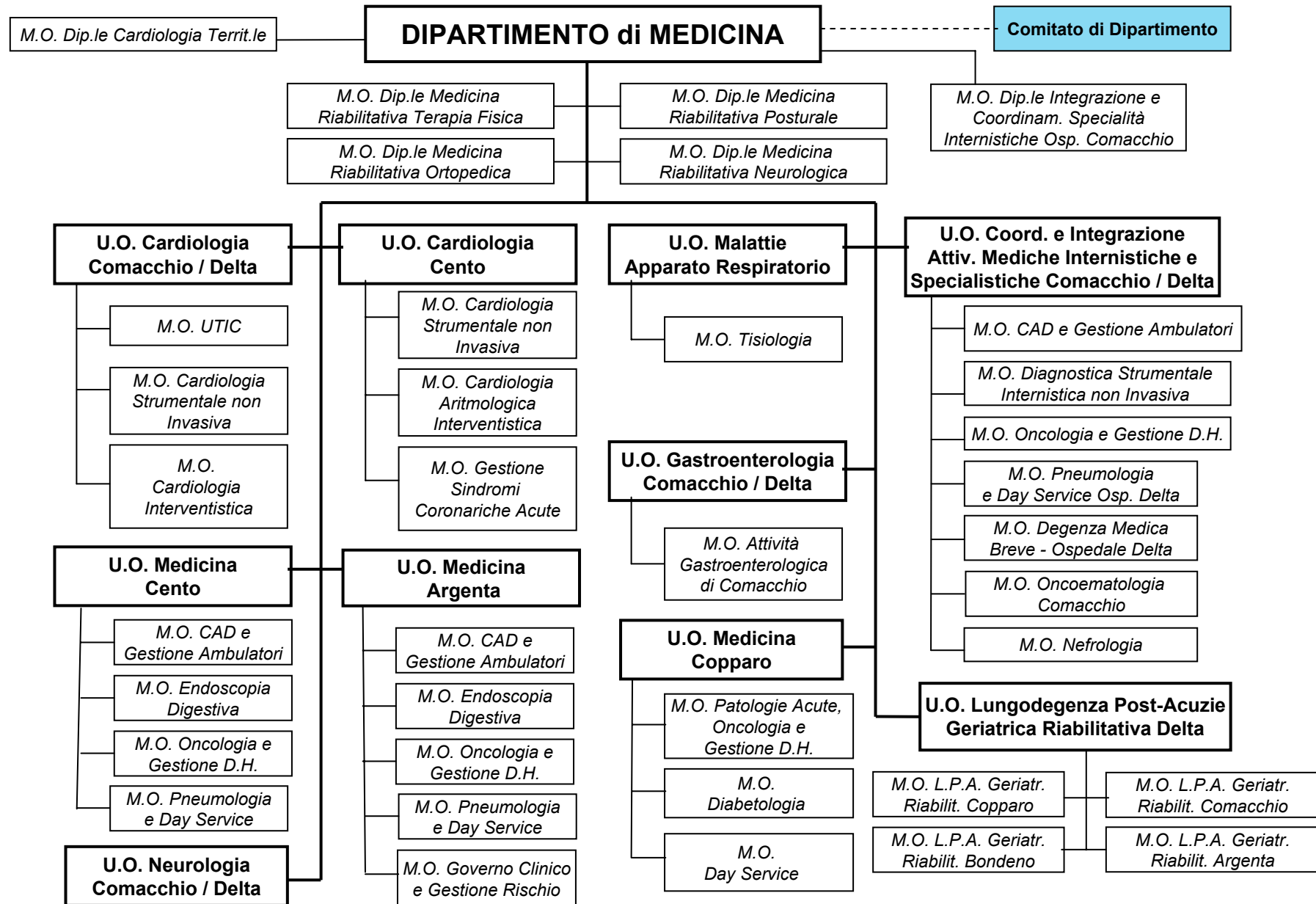
# ***DIPARTIMENTI OSPEDALIERI***



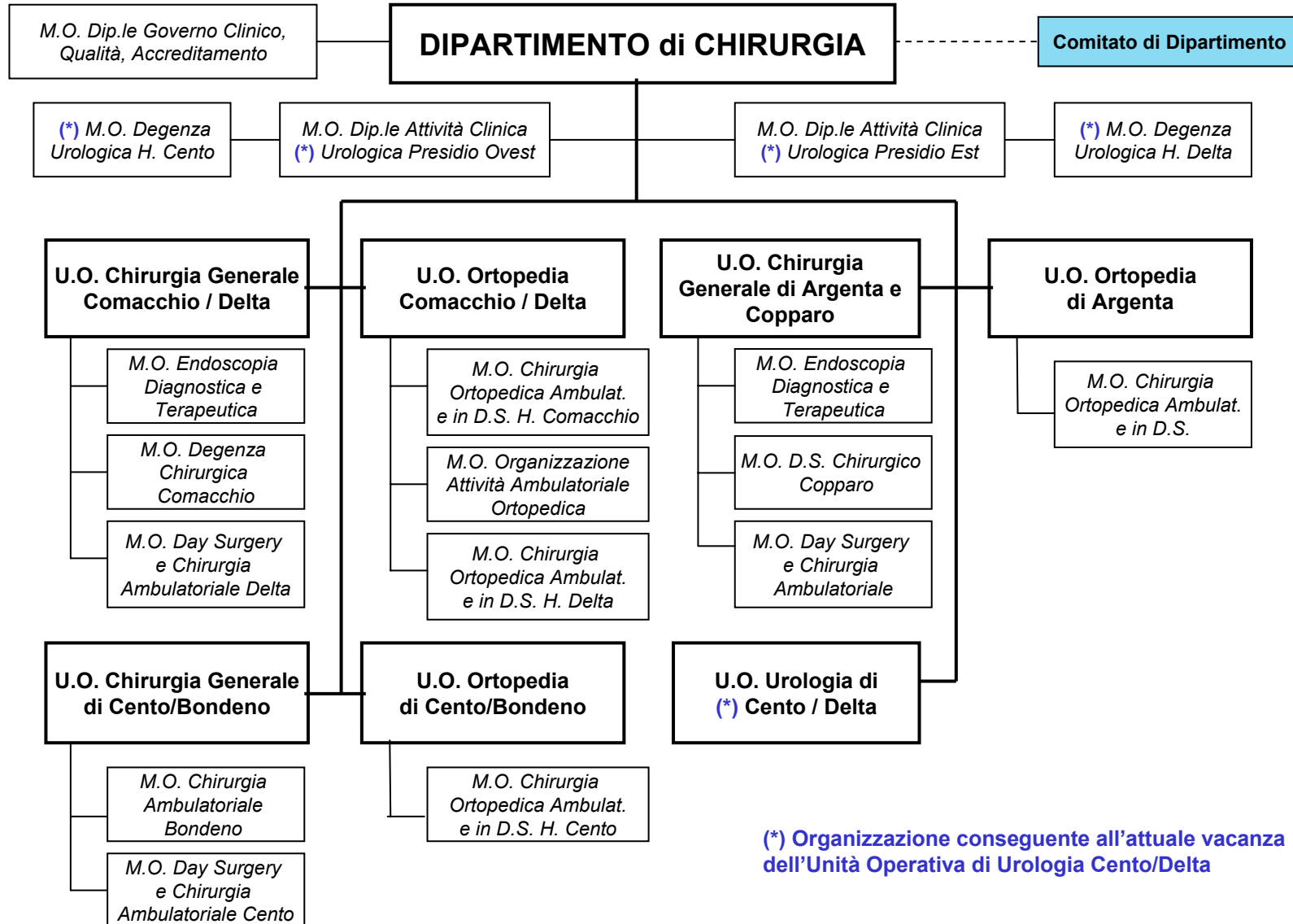
# Dipartimento dell'EMERGENZA



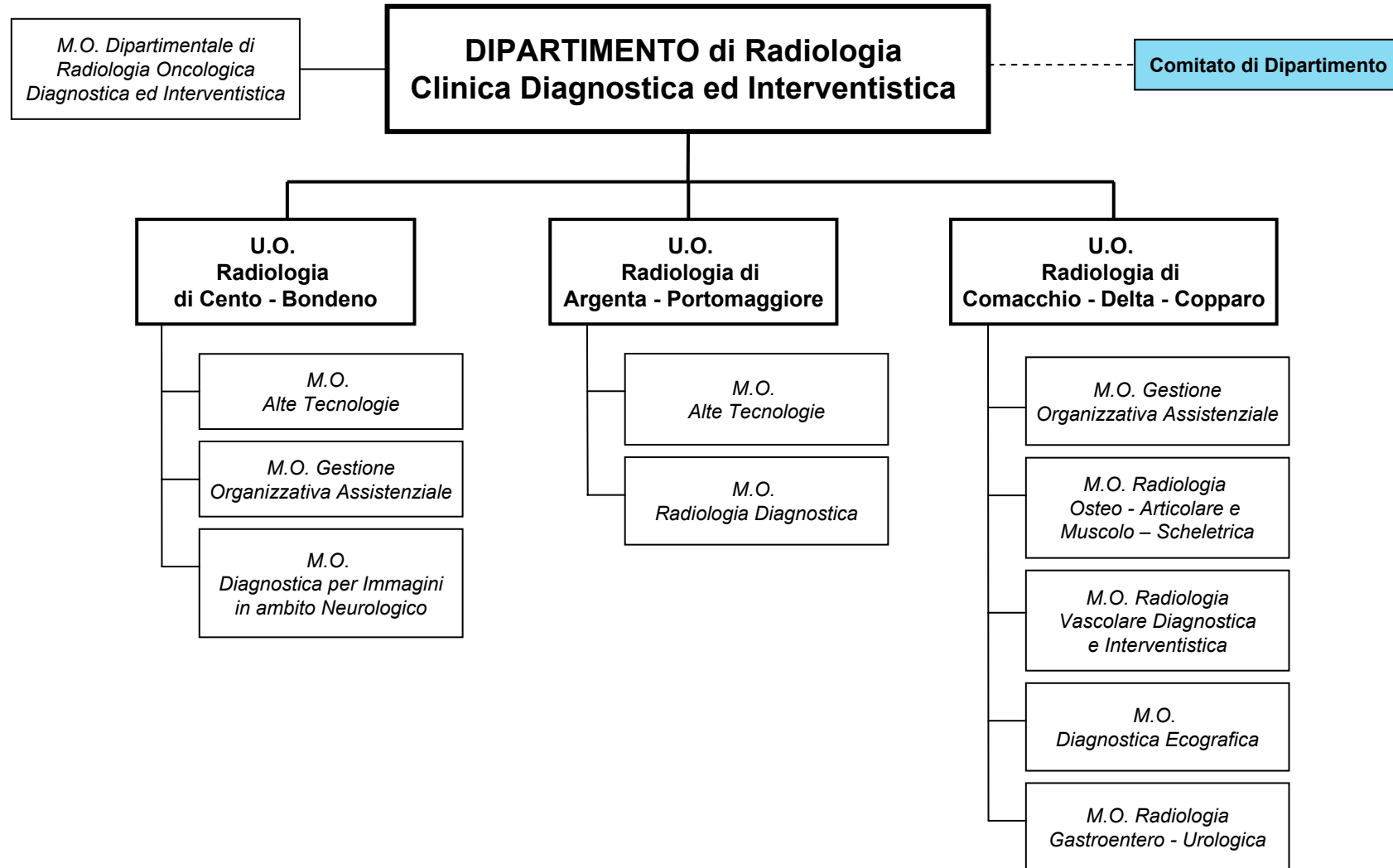
# Dipartimento di **MEDICINA**



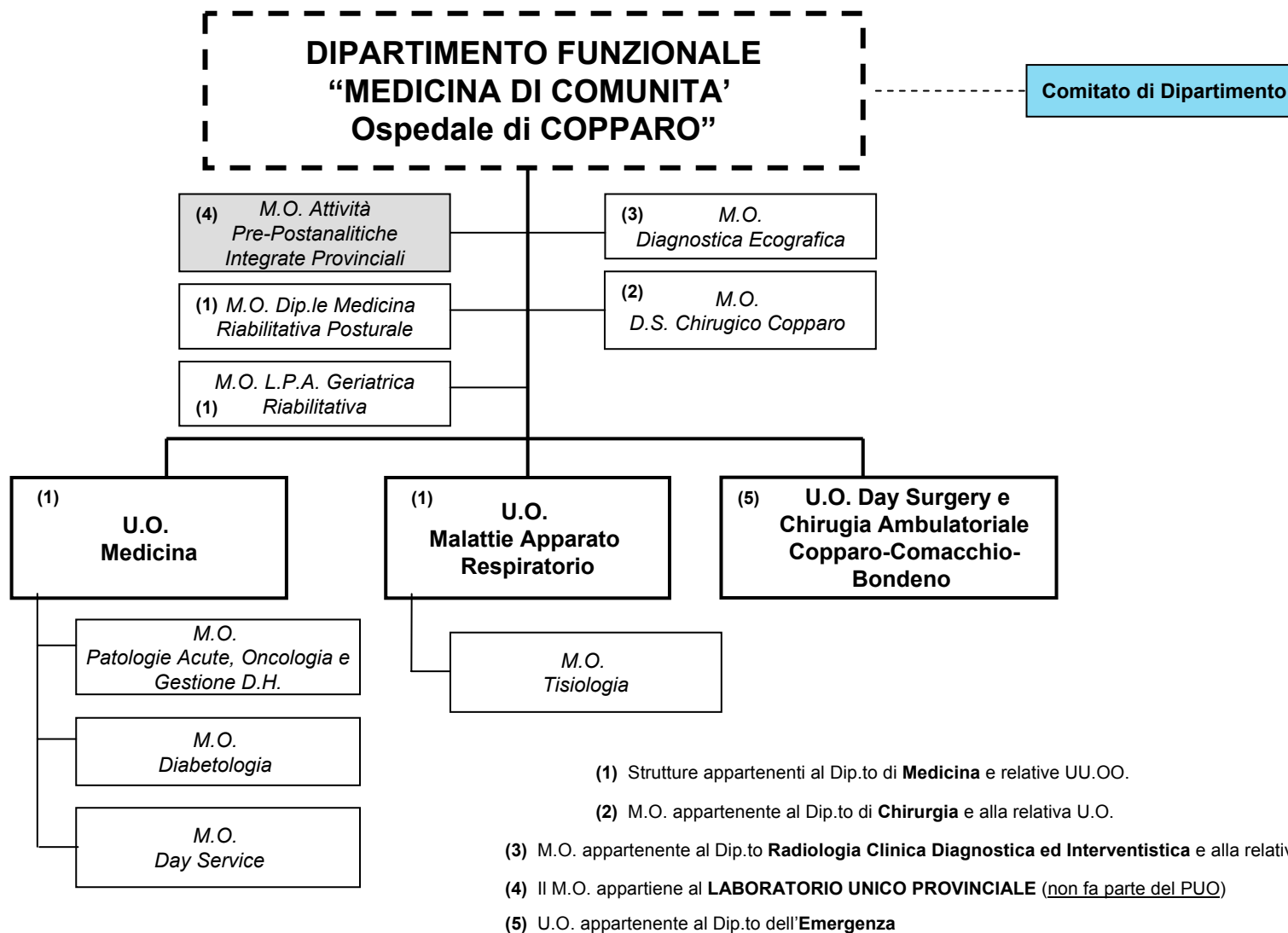
# Dipartimento di CHIRURGIA



# ***Dipartimento di Radiologia Clinica Diagnostica ed Interventistica***



# **Dipartimento Funzionale** **“MEDICINA DI COMUNITA’ Ospedale di COPPARO”**





# Dipartimento MATERNO INFANTILE

