

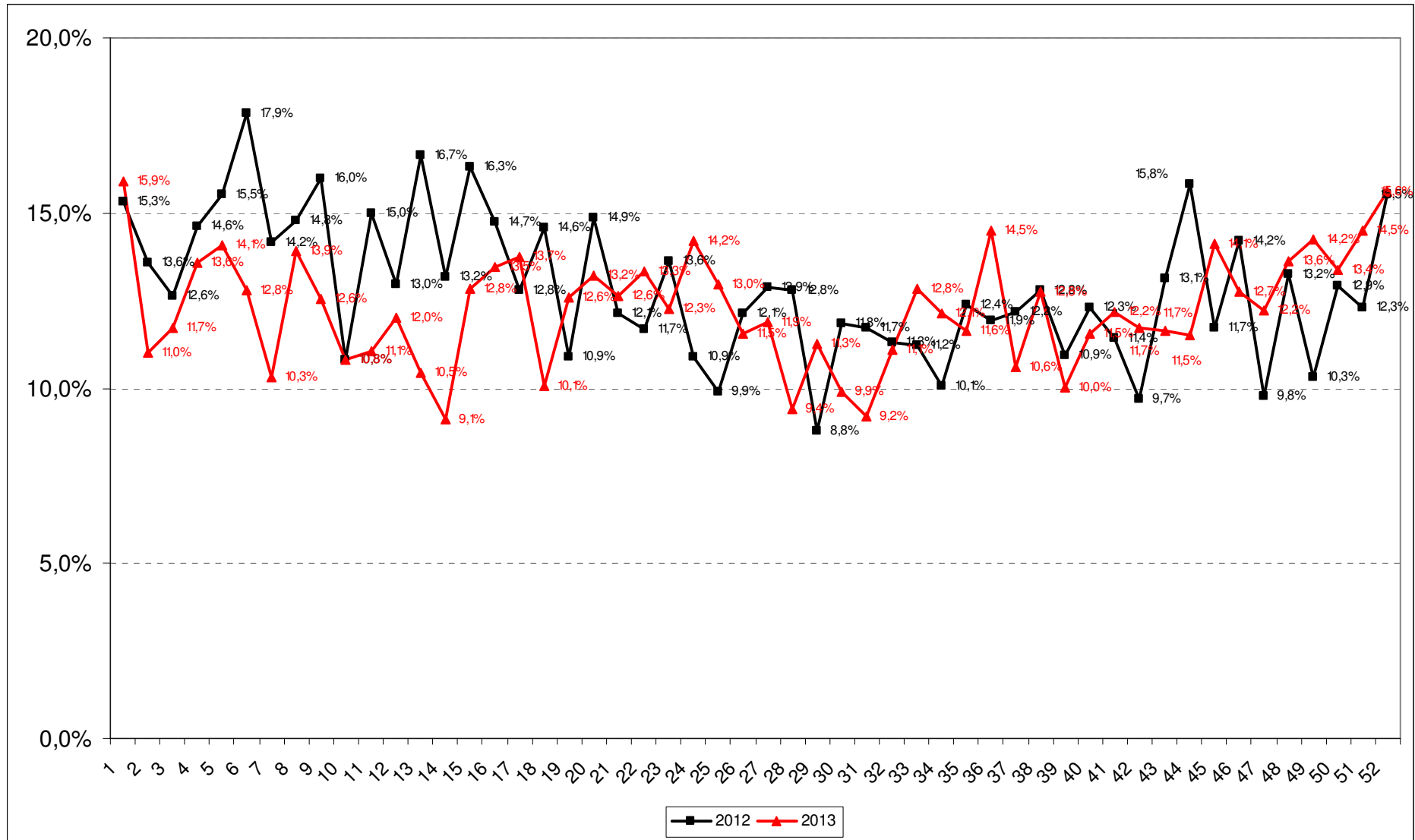
Pronto Soccorso attuale Ospedale Cento



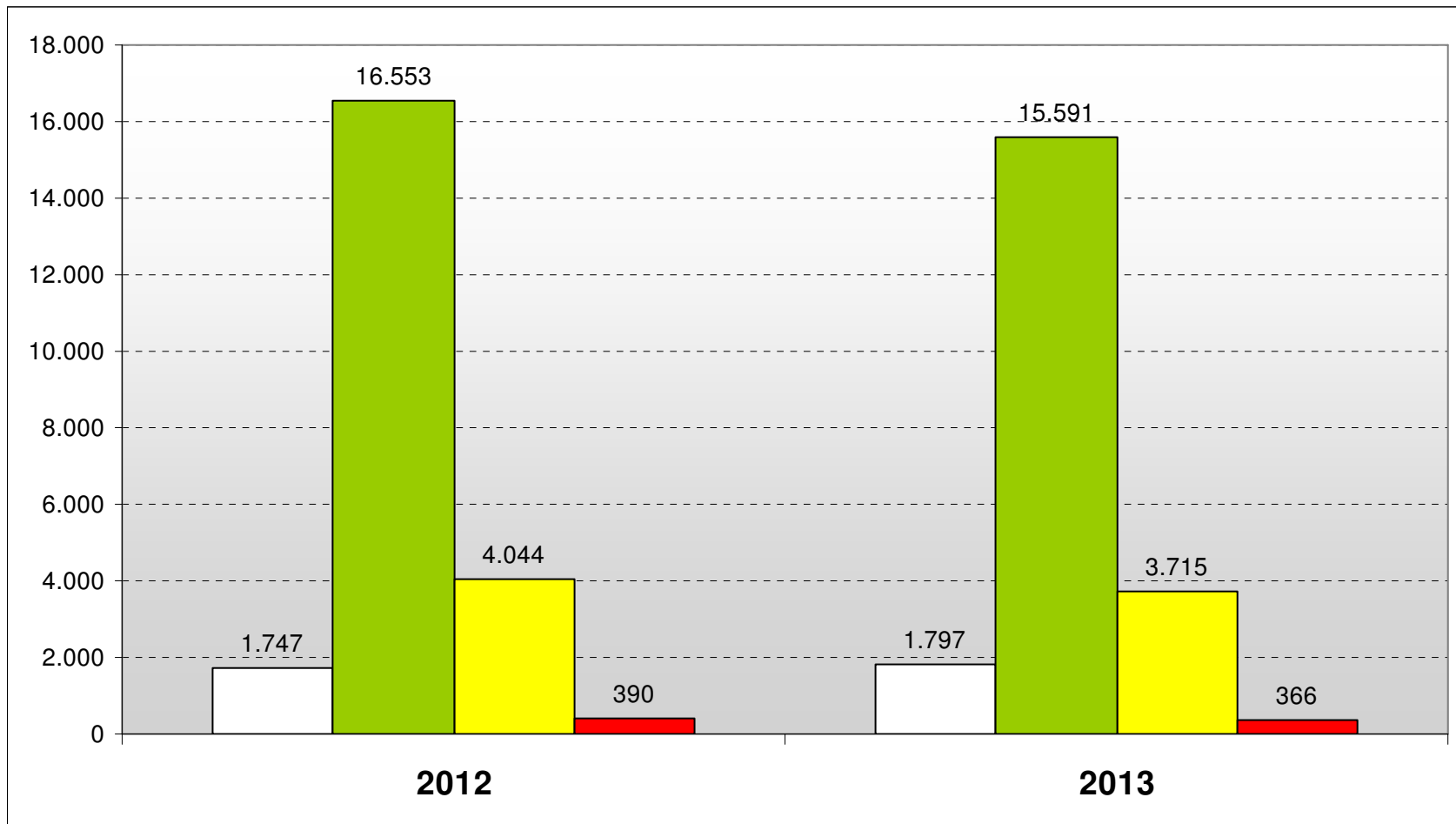
Dati Pronto Soccorso Cento

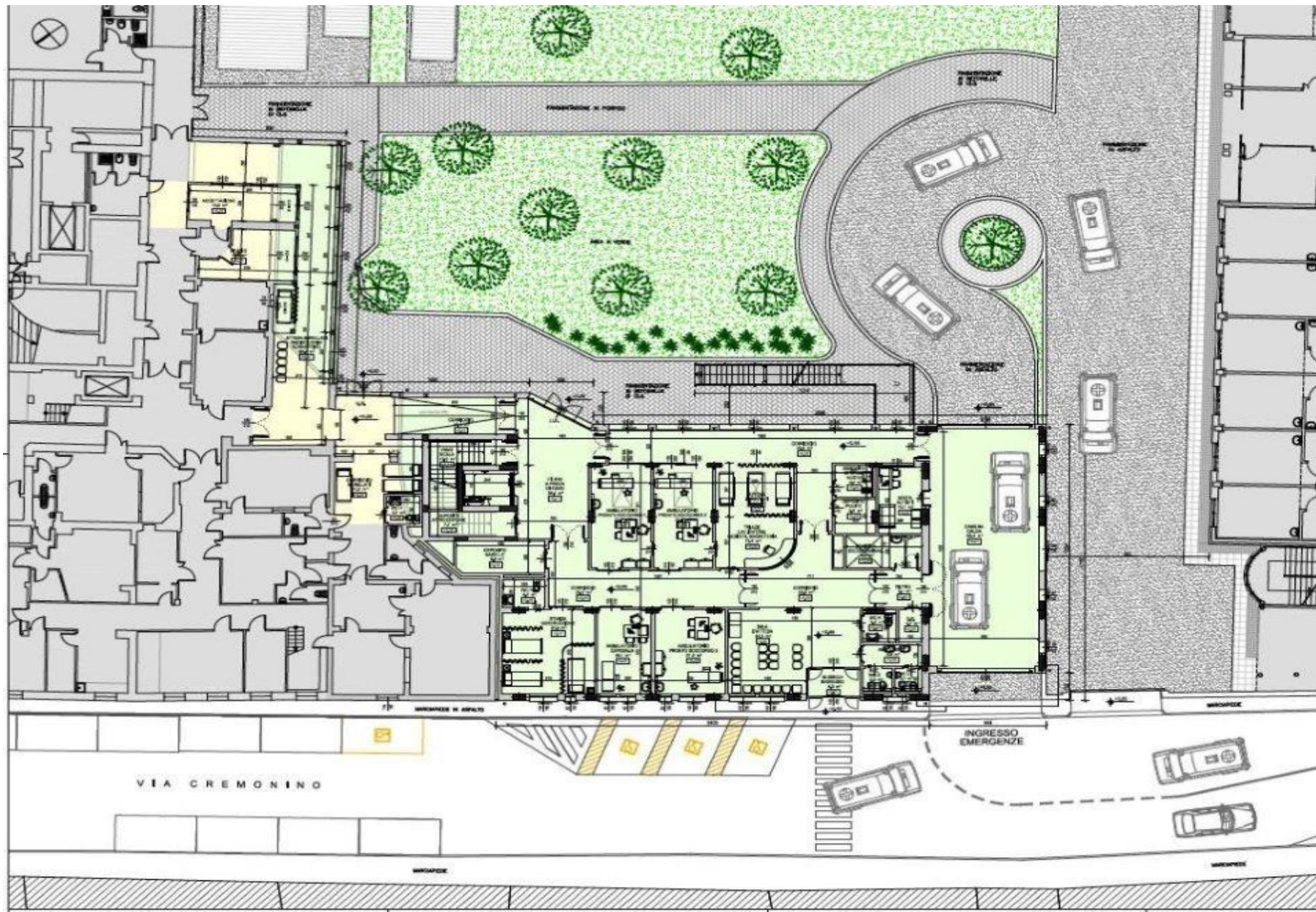
	2012	2013
Accessi	23.193	21.876
Ricoveri	2.970	2.677
% Ricovero	12,8%	12,2%

Percentuale ricovero PS Cento



Accessi per codice triage





veduta dal giardino interno



PROSPETTO EST
SCALA 1:100

veduta da via Cremonino



